

NIVIQURE

NIVIQURE ECT SYSTEM WITH POST-ECT EEG MONITORING FACILITY

Niviqure monitored ECT system designed for minimal memory impairment, post-ECT confusion, etc.

Unique Features :

- ❖ Dual mode operation of ECT Machine :
 - * Simplicity in standalone mode
 - * Customisation and finer settings in computerised mode

- ❖ Compactness of post-ECT EEG module:
 - * 5.8" TFT display
 - * Micro-SD card memory
 - * Niviqure software for analysis using computer



Integrated ECT (Model Niviqure-VR) And EEG (Model Niviqure-B3) System

In view of continuous upgrades and design development the actual model may vary from the pictures and specifications shown in this brochure.

NIVIQURE

An ISO 13485:2003 & ISO 9001: 2008 certified company

Web site: <http://www.niviqure.com>

Email: info@niviqure.com

Model B3- 2012 -a

Authorized agent:

Designed, developed and manufactured in India.

NIVIQURE

NIVIQUIRE

Model: NIVIQUIRE - VR

NIVIQUIRE ECT system

NIVIQUIRE ECT system produces pulsed, constant current, bidirectional, electronically controlled electrical charge (milli-coulombs) for BEST THERAPEUTIC EFFECT. This ensures JUST ADEQUATE ELECTRICAL DOSAGE required for least side effects like memory impairment, post-ECT confusion, etc. SAFETY of medical attendants and other Electro-medical / electronics apparatus in contact with the patient at the time of ECT administration are ensured by thorough isolation.

Features:

- ✓ AUTO set electrical dosage.
 - Auto increment feature in case of sub-shocks.
- ✓ With computer hook-on:
 - Off-line or On-line data recording and retrieval.
 - Automatic dosage setting based on Sex, Age and Inion-Nasion distance.
 - Auto increment feature in case of sub-shocks.
 - Post-ECT EEG monitoring and display.
 - Record storage and retrieval facility.
 - Printer output for record purposes.
 - Time domain and Frequency domain (Spectral power) analysis / reportage



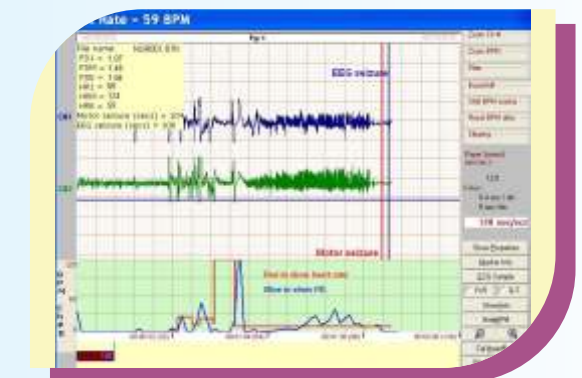
4-Ch Online ECG/ EEG



Compressed EEG Waveform – Post ECT



Representative ECG waveform (demonstrating waveform quality)



Compressed EEG waveform (as seen on computer with Niviqure software)

Post-ECT EEG monitoring module

MODEL:NIVIQUIRE-B3 (Dimension: 170 x 200 x 55 mm)

NIVIQUIRE-B3 Model: Has a 5.7" color graphic LCD display, SD card memory, battery operated, USB interface and Printer interface.

Features:

- Withstands high voltages, surges during ECT procedure.
- Number of channels selectable: 2 or 4 channels.
- Optimal X and Y-axis scale, signal cleaning digital filters provided for post-ECT EEG/ECG monitoring signal levels.
- Sampling rate set to 1000 samples per second per channel.
- Data saving / retrieval is possible:
 - The data is directly collected into the SD card. Off-line data downloading and saving into computer.
- Data translation into BIN, ASCII formats possible. This permits easy / quick data transfer into other standard software.
- Niviqure software for analysis and report generation in computer.



Model NIVIQUIRE-VR ECT machine (Can be used with or without a computer)

Specification

| | Parameters | Standalone Mode | Computer Mode |
|------------------------|---------------------------------|--|-----------------------|
| Output | Constant currentPulse amplitude | 800 mA | 200 to 1000 mA |
| | Pulse width | 1.5 ms | 0.5 to 2 ms |
| | Frequency | 125 PPS | 50 to 200 PPS |
| | Duration | 0.4 to 3.6 Sec | 0.1 to 20 Sec |
| | Charge | 60 to 540 mC(9 Steps) | Variable |
| | Pulse waveform | Bidirectional | |
| | Interface to the computer | Through USB / RS 232 Port. | |
| Input | AC | 230V, + / - 10%, 50 Hz | |
| | Trigger | Remote on hand - held electrode | |
| Built-in Safety | Timer Control | Electronic | Electronic & Computer |
| | Opto-Isolation from computer | Not applicable | Available |
| | Transformer Isolation | Yes | Yes |
| | Relay Isolation | Yes | Yes |
| | Audio and visual indication | Yes | Yes |
| Mechanical | Dimensions , Weight | 290 x 250 x 80 mm, Approx. 5 Kgs, Plastic casing | |
| EEG Module | Amplifier Gain | 1000 | |
| | Frequency Band | 0.5 to 100 Hz | |
| | Sampling rate | 1000 samples per second per channel | |