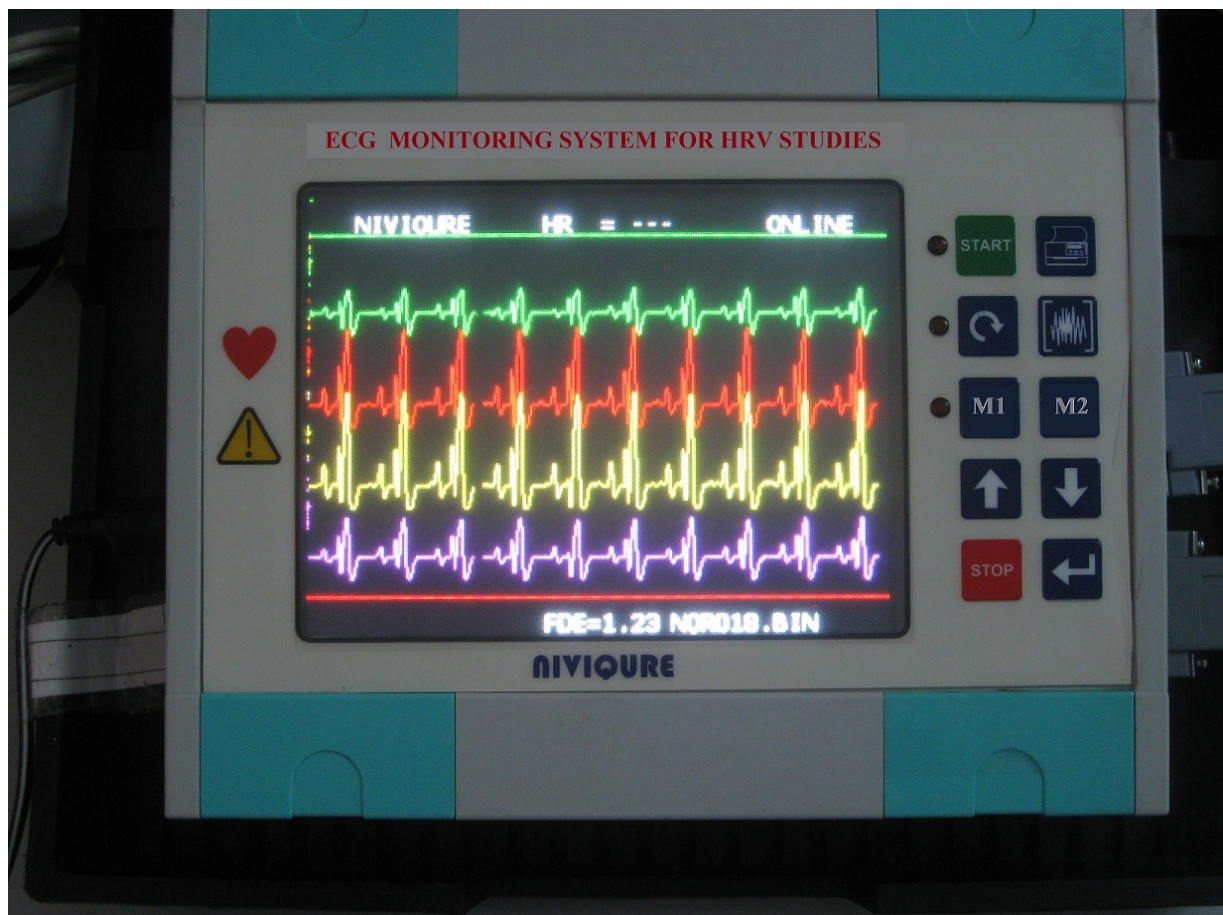


NIVIQURE ECG SYSTEM FOR HRV STUDIES

Model NIVIQURE-B3-2

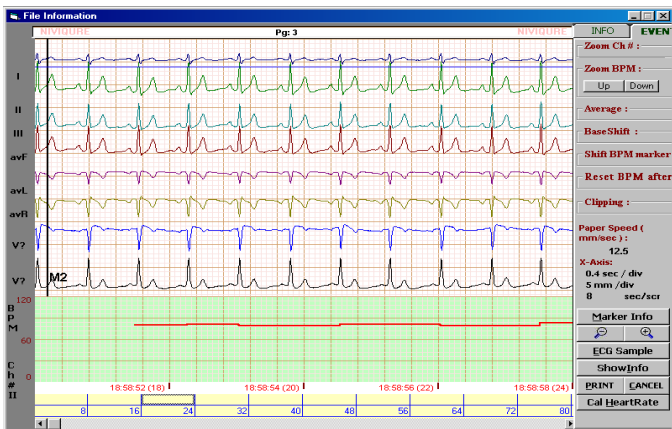
NIVIQURE-B3.2 Model: Has a 5.7" color graphic LCD display, SD card memory, battery operated, USB interface and Printer interface.



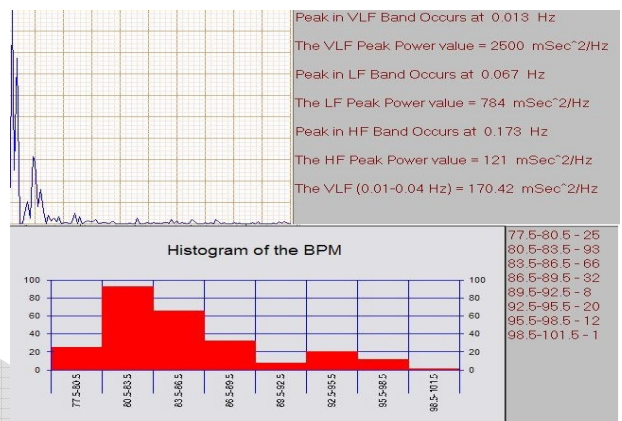
Niviqure B3-2 ECG module is a compact HRV designed to record ECG signal anywhere, anytime. It has heart rate variability analysis and irregular heart beat warning.

Technical Specification

- Number of channels selectable: 2 or 4 channels.
- Frequency band: 0.5 to 100 Hz.
- Optimal Zoom (Y-axis), Time (X-axis), digital filters provided..
- Sampling rate set to 1000 samples per second per channel.
- Data saving / retrieval is possible in any of the following modes:
 - On-line data display.
 - Off-line data acquisition.
- Can be used with or without a computer.



Representative ECG waveform
(demonstrating waveform quality)



Time domain and Frequency domain analysis
(as seen on PC with Niviqure software)

- Modes:
 - 2-channel mode (Lead I and Lead II)
expandable view to 6-channels (Leads I, II, III, aVr, aVf, aVl)
 - 4-channel mode (Leads I, II and any two chest leads)
expandable to 8-Leads (Leads I, II, III, aVr, aVf, aVl and any two chest leads).
- Sampling rate: 1000 samples per second per channel during storage in micro-SD card. 125 samples per second for viewing on LCD screen as well as on computer screen.
- Micro-SD card storage memory: 2 Gb.
- Analysis: Heart Rate (HR), ST Segment (ST), QRS Interval (QRS), Irregular Heart Beat (IHB)
- Heart Rate Variability Analysis Software included for offline studies using computer
- R-wave editing; RR interval data export

Designed, developed and manufactured in India.

In view of continuous upgrades the actual model may vary from the pictures and specifications shown in this brochure.

New model B3- 2012 -a

An ISO 13485:2003 & ISO 9001: 2008 certified company

Web site: <http://www.niviqure.com>

Email: info@niviqure.com